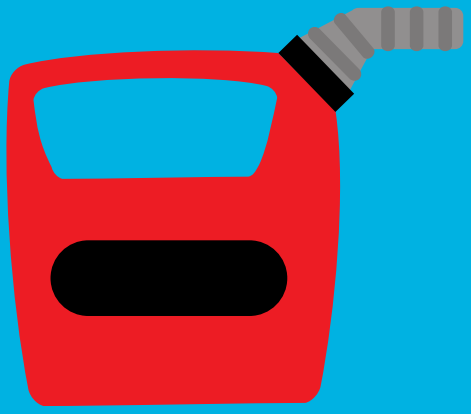


P

## **Petrol/Power**

Preparation is key: Don't risk leaving it until the last minute to top-up or charge



O

## **Oil**

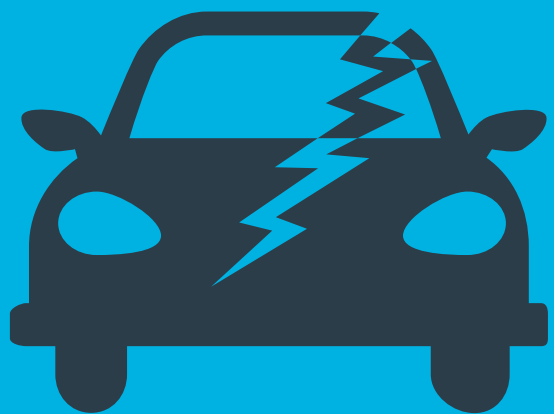
Regularly checking your oil level will keep your car healthy and less likely to break down



W

## **Water**

Coolant, screenwash and a spare bottle in the boot



D

## **Damage**

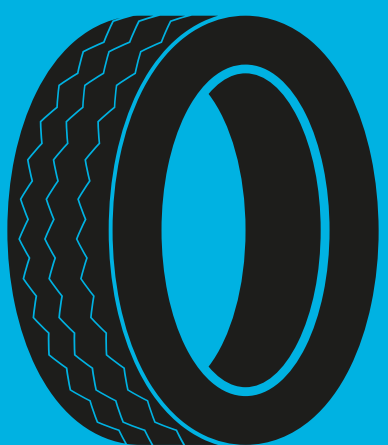
Visually check your exterior, especially tyres, as well as for any dashboard warning lights



E

## **Electrics**

Lights, washers, horn, as well as any high-tech kit in your car - all need to be checked



R

## **Rubber**

Tyre condition is of critical importance - bad tyres are dangerous and could land you with points and a fine



Y

## **You**

Are you fit to drive? Stress, alcohol, fatigue could impair your driving. Check yourself!